

IMPORTANT: PLEASE READ PRIOR TO INSTALLATION

1. Prior to installation it is important to unpackage & inspect your products to ensure no damage has occurred in transit. If damage has occurred, or a visible defect exists, do not proceed with installation and contact supplier IMMEDIATELY. NO claims for damage / defects will be recognized after installation.

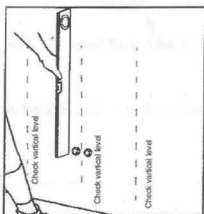


Fig.1

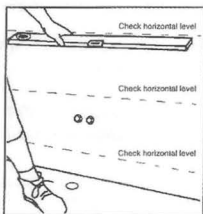


Fig.2

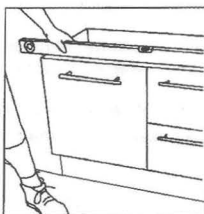


Fig.3

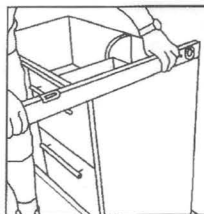


Fig.4

2. Check that wall is level and plumb both vertically and horizontally (fig.1 and fig.2). If your wall is out of plumb, or is not flat, you will need to pack your vanity so as not to follow the wall. **Your vanity must be level**, otherwise it will twist and your doors and drawers will be out of alignment.

3. Mark base and back of vanity for drilling to allow for plumbing pipes.

4. Drill holes for pipes with appropriate size hole saw.

5. Position vanity over pipes in correct position. It may be an idea to use a level support / noggin to assist in levelling a wall hung unit and help identify any un-plumb surfaces which may require packing prior to fixing the unit to the wall.

6. Check with spirit level that the vanity unit is **completely level** (fig.3 and fig.4)

7. Fix vanity to wall through back of vanity ensuring the correct screw/dynabolt size is used by the installer to suit the installation situation. Where studs cannot be located, it is recommended to use toggle bolts or appropriate hollow-wall fixings. Allow enough fixing points, evenly spaced at the top AND bottom of the back panel (refer fig.5), to sufficiently hold the particular unit size onto the situation of the installation area. It may be handy to apply some silicone/adhesive to the rear of the unit prior to fixing, this may assist in levelling and fixing the unit to the wall.

8. Adjust doors and drawers if required as there may have been some movement during transportation and installation. (refer instructions over)

9. Vanity top is then to be siliconed to the top of the cabinet.

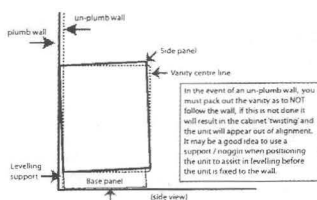
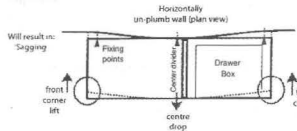
10. All edges where vanity top and cabinet meet wall and floor are to be sealed with silicone. Gap filler sealant can be used in place of silicone where unit meets tiled surfaces. All areas need to be sealed to prevent water penetration. Materials used for construction of this unit are **water resistant Not water proof**. Care must be taken to dry any spillage or leakage of water which may gain access to cabinet. It is recommended that vanities are installed over 300mm from any wet areas such as baths, spas and showers.

11. Where a separate basin is to be fitted it is **essential** that the basin is fully sealed to the cabinet and top to prevent any water penetration.

12. Waste is not to be over tightened to avoid stress on basin or top. (recommendation for waste to be **HAND tight only**)

Levelling: IMPORTANT

When installing a vanity to an un-level or un-plumb surface, you **MUST** pack the unit out so that it is level and **NOT** following the wall. Fixing the unit to an un-plumb wall will cause it to twist and the unit will appear out of alignment. The cause of this 'sagging' appearance is simply due to the top of the cabinet hugging or following the wall, while the base of the cabinet remains straight and firm, pushing the divider panels (vanity centre line) forward. Once the unit is packed, level and straight, you may continue installation and fix the vanity to the wall. There are no set fixing points on this unit, as every area situation is different, that is the reason behind the use of a 16mm solid back panel. The installer should allow enough fixing points, evenly spaced at the top AND bottom of the back panel, to sufficiently hold the particular unit size onto the situation of the installation area.



In the event of an un-plumb wall, you must pack out the vanity as to NOT follow the wall. If this is not done it will result in the cabinet twisting and the unit will appear out of alignment. It may be a good idea to use a support / noggin when positioning the unit to assist in levelling before the unit is fixed to the wall.

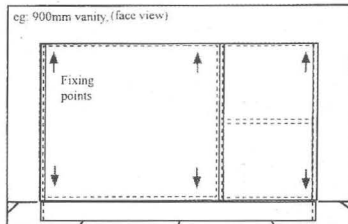


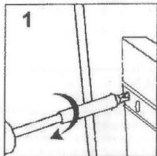
Fig.5

13. To maintain finish on your cabinet and top, use only a soft cloth or weak solution of non-abrasive detergent.

14. To restore accidental scratches, marks, etc. on two pack polyurethane and acrylic tops, rub gently with ADP Gold Series Bathroom cleaner & polish, car cutting compound, car polish or household brass/silver cleaner.

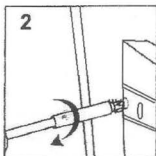
Please note - Manufacturer will not be liable for the cost of installation or removal of any unit and the warranty will be VOIDED if damage occurred during or after INSTALLATION.

DOOR AND DRAWER ADJUSTMENT: It is the RESPONSIBILITY of the Licensed INSTALLER to make any adjustments to align doors and drawers after installation if required:



DRAWER FIXTURES:

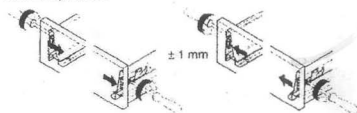
To move drawer front up, turn screw clockwise, anti-clockwise to adjust down. As shown in Diagram.



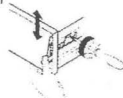
If front becomes loose, hold drawer front pressing in towards vanity carcase and tighten screw in clockwise until firm as shown in Diagram.

3 Stainless steel drawer system:

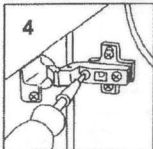
Lateral adjustment



Height adjustment
± 2 mm

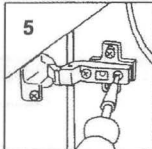


Tilt adjustment

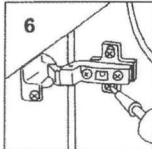


DOOR HINGE FIXTURES:

Screw clockwise to move whole door right. Screw anti-clockwise to move whole door left, as shown in Diagram.



Turn screw to move whole door inwards & outwards, as shown in Diagram.



Loosen top & bottom screws to adjust door. Door can be manually moved up or down. Retighten screws at desired position, as shown in Diagram.



* Specifications may change without notice.
* All dimensions given are approximate and should be checked prior to installation
* Issue date Nov 2009